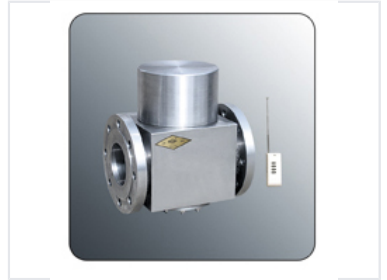


Industrial Pipeline Gate Valve

This gate valve is designed for controlling the flow of fluids in pipelines. It features a robust metal construction with flanged connections for secure installation in various industrial applications.



Product Overview

Industrial Pipeline Gate Valve

This industrial gate valve is engineered for precise flow control in demanding pipeline environments. Built with robust metal construction and featuring reliable flanged connections, it ensures a secure and leak-resistant installation. It is an ideal solution for various industrial applications where consistent and durable fluid management is required.

Technical Specifications

Design Features

- Robust construction
- Secure flanged connections
- Reliable flow regulation

Connection Type	Flanged
Construction Material	Metal
Application Suitability	Industrial Pipeline, Fluid Control