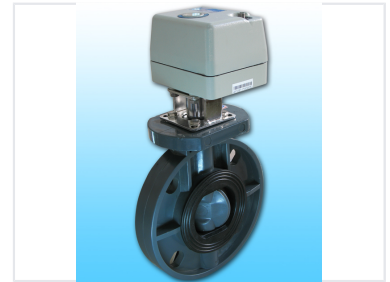


Industrial Ball Valve with Automated Actuator

This industrial ball valve features an automated actuator for fluid control. The valve is constructed from durable gray plastic and includes a black rubber seal.



Product Overview

Industrial Fluid Control Solution

This industrial ball valve features an integrated automated actuator designed for precise fluid control. Built with a durable gray plastic body and a high-quality rubber seal, it ensures reliable performance in demanding industrial environments. The unit includes a robust stainless steel bracket and a weatherproof actuator housing for long-term operational stability.

Technical Specifications

Body Material	Durable gray plastic
Seal Material	Black rubber
Mounting Bracket	Stainless steel
Actuator Housing	Weatherproof light gray housing
Model Identifier	41106111609053

Application

Primary Application	Industrial Fluid Control, Automated Flow Regulation
---------------------	---