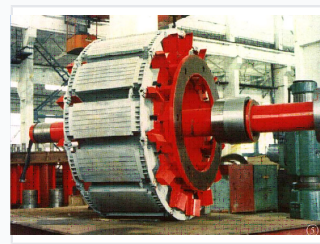


Hydroelectric Turbine Generator

This hydroelectric turbine generator converts water's kinetic energy into mechanical energy. It is designed for efficient and reliable power generation in hydroelectric power plants.



ADDITIONAL IMAGES



Product Overview

High-Performance Hydroelectric Power Solutions

These hydroelectric turbine generator units are engineered for reliable, high-capacity power generation in diverse hydropower station environments. The product line includes multiple turbine configurations, including Pelton, Francis, Axial, and Tubular designs, ensuring compatibility with varying water flow and head requirements. Each unit is supported by essential auxiliary equipment, such as valve units and excitation devices, to provide a complete, integrated power generation system.

Technical Specifications

Turbine Configuration Capabilities

Turbine Type	Runner Diameter Range	Max Capacity
Pelton	0.32m - 2.75m	Up to 30MW
Francis	0.42m - 5.0m	Up to 100MW
Axial	0.80m - 8.0m	Up to 50MW
Tubular	1.80m - 8.0m	Up to 100MW

Available Turbine Types

Pelton, Francis, Axial, Tubular

Auxiliary Equipment

Included Auxiliary Systems

- Valve units
- Excitation devices
- Metal support structures