

# Hydraulic Pilot Control Valve with Integrated Logic

This hydraulic pilot control valve features a compact structure and integrated auxiliary logic valve. It offers stable proportional control and reliable electromagnetic positioning.

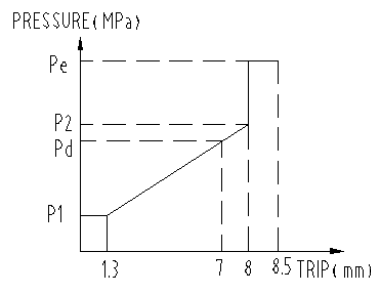


## Overview

### High-Performance Hydraulic Control

This hydraulic pilot control valve features a compact, ergonomic design with an integrated auxiliary logic valve for precise machine operation. Engineered for demanding environments, it offers stable proportional control and reliable electromagnetic positioning. The unit supports customization of pressure characteristic curves to match specific multi-way valve requirements, ensuring optimal performance across various heavy-duty machinery applications.

## Technical Specifications



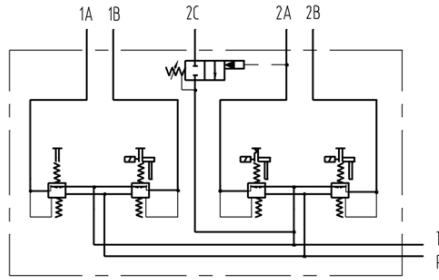
Pressure response curve illustrating the valve's performance characteristics.

Maximum Inlet Pressure	5 MPa
Maximum Control Flow	16 L/min
Maximum Return Pressure	0.3 MPa
Control Pressure Range	0.4~1.9MPa

## Electrical Data

Operating Voltage	24 V
Operating Current	200~230mA
Rated Suction	230 N

## Environmental & Fluid



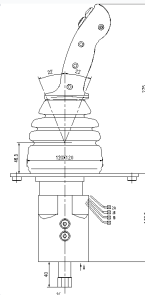
Port layout and connectivity for the hydraulic pilot control system.

Operating Temperature	-40 <sup>^</sup> 121
Oil Temperature Range	-20 <sup>^</sup> 80
Viscosity Range	10 <sup>^</sup> 380mm <sup>2</sup> /s
Hydraulic Fluid Standard	Mineral oil (HL, HLP) per DIN 51 524
Required Oil Cleanliness	NAS 1638 level 9

## Applications

Primary Applications	Loader, Bulldozer, Hoisting Machinery, Agricultural Machinery, Material Handling, Garbage Compactor, Forestry Machinery, Container Crane, Drilling Rig
----------------------	--

## Dimensions



Dimensional specifications including mounting plate and handle inclination.

### Physical Dimensions

Parameter	Value
Overall Height	275 mm
Base Dimensions	120 x 120 mm
Valve Body Height	139.5 mm
Mounting Plate Height	48.5 mm
Control Shaft Diameter	20 mm
Handle Inclination	22 degrees