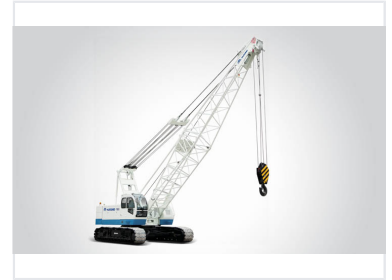


Hydraulic Crawler Crane

This hydraulic crawler crane features a robust crawler system for stability on various terrains. It is equipped with a long boom and a heavy-duty hook for handling large loads in construction, infrastructure, and industrial applications.



Overview

Heavy-Duty Hydraulic Crawler Crane

This hydraulic crawler crane is engineered for demanding construction and infrastructure projects, offering a maximum lifting capacity of 125 tons. It features a robust crawler system for stability across varied terrains and a versatile boom configuration that extends up to 73 meters. Equipped with a powerful 215 kW engine and precise control systems, this machine provides reliable performance for high-efficiency lifting operations.

Engine & Performance

Rated Power

215 KW
Power

2100 RPM
Rated Speed

Engine Model	Dongfeng Cummins 6 LTAA8.9-C295
Fuel Tank Capacity	400 L

Lifting Capabilities

Hoist Tension

12.5 t
Rated Tension

23.5 t
First Layer Tension

Maximum Lifting Capacity	125 t
Maximum Lifting Torque	120 t.m

Boom Specifications

Boom and Jib Configuration

Component	Length
Basic Boom	16 m
Longest Boom	73 m
Basic Vice Arm (Jib)	13 m
Longest Vice Arm (Jib)	25 m

Dimensions & Stability

Crawler Dimensions

5400 mm

Width

6900 mm

Center Spacing

Operating Radius	5 - 50 m
------------------	----------

Tail Radius	5.5 m
-------------	-------

Features

Standard Features	Air Conditioning, Digital Instrument Display, Crawler Mobility
-------------------	--