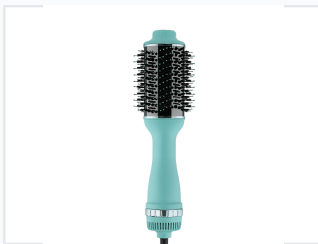


Hot Air Brush for Hair Styling

This hot air brush dries and styles hair at the same time. It features a round brush head with bristles and vents for airflow, along with a heating element to provide gentle heat.



ADDITIONAL IMAGES



Product Overview

Professional Styling Efficiency

This versatile hot air brush is engineered to dry and style hair simultaneously, streamlining your grooming routine. Featuring an ergonomic design for comfortable handling, it allows for precise styling whether you are creating voluminous curls or achieving a smooth, sleek finish. The integrated heating element and airflow vents ensure gentle, consistent heat distribution suitable for various hair textures.

Technical Specifications

Model Number	WPK-2000
Heat Settings	Multiple Settings

Design & Features

Color	Teal
Brush Type	Cylindrical round brush
Cord Mechanism	Swivel cord for tangle-free operation

Safety & Compliance

Safety Instructions

- Read instructions carefully before use
- Keep away from water