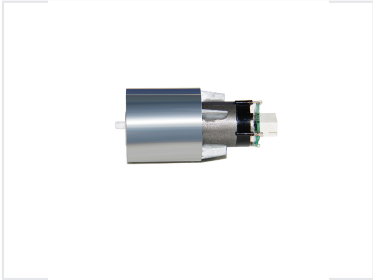


High-Speed Brushless Motor

This high-speed brushless motor features a compact, lightweight design. It delivers speeds up to 100,000 RPM and is suitable for various applications.



ADDITIONAL IMAGES



Overview

High-Performance Brushless DC Motor

This compact, high-speed brushless DC motor is engineered specifically for modern personal care appliances, such as professional hair dryers. It features a lightweight, space-saving design that integrates advanced electronic control, ensuring efficient airflow and reliable performance. With a robust engineering customization platform available, this motor can be tailored to meet specific project requirements, offering a versatile solution for high-speed application needs.

Technical Specifications

Performance Metrics

100000 RPM

Max Speed

85 W

Power Output

| | |
|---------------|------------|
| Model Number | PBL1814220 |
| Rated Voltage | 220 V |
| Voltage Range | 100-230V |
| Rated Power | 85 W |
| Rated Speed | 100000 RPM |

Key Features

| | |
|------------|-------------------------------------------------------------|
| Advantages | High Speed, Small Size, Compact, Light Weight, Customizable |
|------------|-------------------------------------------------------------|