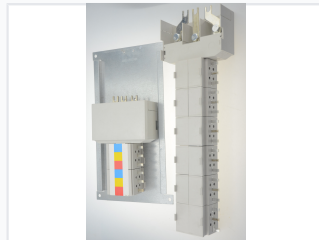
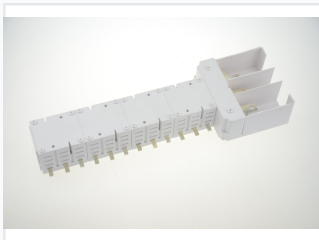


High Current Busbar

This busbar is designed to carry high current in power transmission and distribution systems. It is engineered with robust materials to ensure optimal performance and safety.



ADDITIONAL IMAGES



Product Overview

High-Performance Busbar System

This busbar system provides a modern, efficient alternative to traditional circuit breaker connection methods. Engineered for high-current applications, it features a wider contact area that significantly reduces power consumption and temperature rise during operation. The modular design is fully customizable to meet specific international electrical standards and regional requirements.

Technical Features

Key Advantages

- Wider contact area for improved efficiency
- Low power consumption
- Reduced temperature-rise during operation
- Modular construction for versatile installation
- Color-coded phase identification

Connection Interface

Blade-style terminals • Metal pin interconnects • Modular mounting plate

Construction & Finish

Silver-plated finish, Corrosion resistant, High-grade conductive material, Durable insulating housing

Applications

Suitable Environments

- Power transmission systems
- Electrical distribution systems
- Switchgear assemblies
- Control panels
- High-power electrical equipment