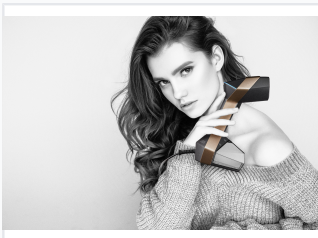


Handheld Garment Steamer

This handheld steamer is designed for garment care and wrinkle removal. It features multiple steam settings for various fabric types and a transparent water tank.



ADDITIONAL IMAGES



Product Overview

Professional Handheld Garment Care

This handheld garment steamer offers a powerful 1500W performance with 10-second fast preheating, making it an efficient solution for quick wrinkle removal. Designed for versatility, it features 5 distinct steam settings and a dual-function design that allows for both dry and steam ironing. With safety features like an 8-minute auto shut-off and anti-calc technology, this device ensures both fabric protection and user convenience.

Performance Metrics

Power Rating

1500 W
Power

120 V
Voltage

Steam Performance

30 g/min
Max Steam Rate

300 kpa
Pressure

Technical Specifications

Dimensions	180 x 115 x 269 mm
Water Tank Capacity	260 ml
Vapor Beam Length	1.5 m

Features

Core Features

- 10s Fast preheat
- 5 Steam settings
- Dry and steam ironing mode
- 2min Self-cleaning
- 8min Auto shut-off
- Removable water tank
- Anti-calc system

Usability Highlights

LED Indicator • Steam Button Lock • Ergonomic Design • Pressurized Steam