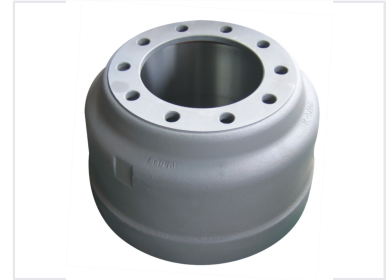


# Gray Cast Iron Brake Drum

This brake drum is made from gray cast iron and designed for use in automotive braking systems. It provides a friction surface for brake shoes or pads to engage, slowing or stopping the vehicle.



## Product Overview

### High-Performance Automotive Brake Drum

This gray cast iron brake drum is engineered for reliable performance in heavy-duty automotive braking systems. Designed to provide a consistent friction surface, it ensures efficient heat dissipation and durability during vehicle operation. The component features a robust cylindrical design with precision-machined mounting points, making it an essential part for maintaining braking safety and integrity.

## Technical Specifications

Material	Gray Cast Iron
Part Number	11-5005-11
Application	Automotive Chassis, Braking System, Heavy Duty

## Manufacturing Capabilities

### Annual Capacity

**200000 tons**

Automobile Castings

### Production Lines

- Static pressure lines
- Moulding lines
- Flexible CNC finishing lines