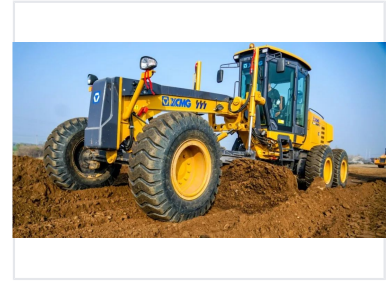


GR180 Motor Grader for Road Construction

The road wheel grader is used for ground leveling, ditching, and slope scraping in large areas. It is suitable for highway, airport, farmland, and water conservancy construction.



ADDITIONAL IMAGES



Overview

High-Performance Motor Grader

This versatile motor grader is engineered for road construction, maintenance, and heavy-duty earthmoving applications. It features a robust high-performance engine and an advanced hydraulic system that ensures precise blade control for superior grading accuracy. Designed with an articulated frame and ergonomic operator cab, it delivers excellent maneuverability and comfort, making it a reliable solution for demanding work environments.

Engine & Performance

Engine Performance

142 kW

Rated Power

2200 rpm

Rated Speed

79 kN

Tractive Effort

Engine Model 6CTA8.3-C190-II

Maximum Gradeability 25 %

Dimensions & Weight

Machine Dimensions

Parameter	Value
Overall Length	8900 mm
Overall Width	2625 mm
Overall Height	3420 mm
Ground Clearance (Front)	430 mm
Tread	2156 mm

Total Operating Weight 15400 kg

Operating Systems

Transmission Speeds

- Forward: 5, 8, 11, 19, 23, 38 km/h
- Reverse: 5, 11, 23 km/h

System Pressures

- Working System: 18 MPa
- Transmission: 1.3 - 1.8 MPa
- Tire Inflation: 260 kPa

Fluid Capacities

Component	Capacity	Unit
Fuel Tank	280	L
Coolant	50	L
Transmission	38	L
Drive Axle	28	L
Engine Oil	24	L
Balancing Box	46	L

Tire Specification

17.5-25