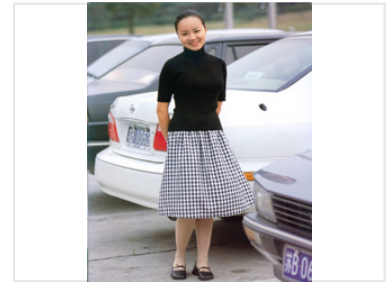


Gingham Skirt and Turtleneck Outfit

This women's set includes a black turtleneck sweater and a black and white gingham skirt. The outfit provides a fashionable and coordinated ensemble.



Product Overview

Classic Gingham Ensemble

This stylish two-piece outfit combines a timeless black turtleneck sweater with a chic black and white gingham skirt. Designed for versatility, this set offers a sophisticated look suitable for various casual and semi-formal settings. The high-contrast pattern and classic silhouette ensure a flattering and polished appearance for the modern professional.

Design Details

Included Items

- Turtleneck Sweater
- Gingham Skirt

Pattern	Gingham
Colors	Black, White

Style & Usage

Style Category

Casual • Semi-Formal • Classic