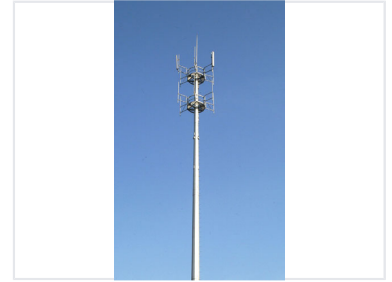


Galvanized Steel Telecommunication Monopole Tower

This galvanized steel monopole tower is designed for telecommunication infrastructure. It features a robust structure for supporting cellular antennas and related equipment.



Overview

Professional Telecommunication Infrastructure

This galvanized steel telecommunication monopole is engineered for robust performance in cellular and microwave network deployments. Designed for high wind resistance and long-term structural integrity, it provides a stable platform for mounting antennas and essential communication equipment. The tower structure is optimized for both durability and ease of maintenance, making it a reliable solution for international wireless network expansion.

Product Details

Global Market Presence

Japan, Middle East, Europe, International

Technical Features

Equipment Mounting

- Multiple antenna mounting platforms
- Maintenance access integrated structure
- High wind resistance engineering

Surface Treatment

Galvanized Steel

Performance Metrics

Proven Track Record

17000 units

Poles Installed