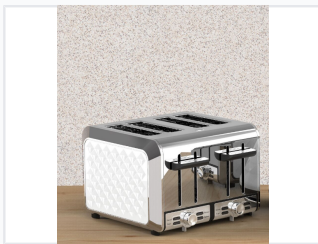


Four-Slice Stainless Steel Toaster with Diamond Pattern

This four-slice toaster features a durable stainless steel construction with a diamond pattern. It includes cancel, reheat, defrost, and bagel functions, as well as a removable crumb tray for easy cleaning.



ADDITIONAL IMAGES



Product Overview

Elegant Four-Slice Toasting Solution

This premium four-slice toaster combines durable stainless steel construction with a sophisticated diamond pattern finish, making it a perfect aesthetic addition to any professional kitchen. It features versatile functionality including bagel, defrost, and reheat modes to handle various bread types with ease. Designed for both performance and convenience, the appliance offers independent control for consistent browning results every time.

Technical Specifications

Power Rating (EU)

1850 W

Maximum Power

240 V

Voltage

Power Rating (US)

1500 W

Power

120 V

Voltage

Features

Functions

- Cancel
- Reheat
- Defrost
- Bagel

Certifications

Approvals

CE, CB, GS, SAA, ETL

Design

Material

Stainless steel housing with diamond pattern