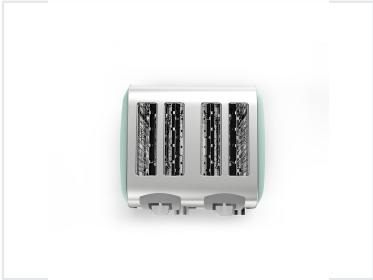


Four-Slice Stainless Steel Toaster

This four-slice toaster features a stainless steel construction. It offers multiple browning settings and includes cancel, defrost, reheat, and bagel functions.



ADDITIONAL IMAGES



Product Overview

Professional Four-Slice Toaster

This durable four-slice toaster features a sleek brushed stainless steel shell, designed for both aesthetic appeal and longevity in a busy kitchen environment. It offers precise control with variable electronic browning settings and dedicated functions for defrosting, reheating, and canceling. With convenient features like a slide-out crumb tray and cord storage, this appliance combines high performance with ease of maintenance.

Technical Specifications

Power Rating

1400 W

Maximum Power

Voltage Compatibility

AC220-240V / 100-120V 50-60Hz

Browning Control

7 levels

Features & Functions

Safety & Design

- Cool touch exterior
- Auto pop-up mechanism
- Auto shut-off
- Anti-slip rubber feet

Available Functions

Defrost, Reheat, Cancel, Bagel

Maintenance & Convenience

Cleaning & Storage

- Slide-out crumb tray
- Cord storage under base