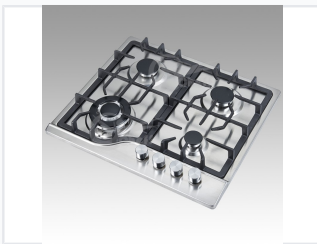


# Four-Burner Stainless Steel Gas Hob with Blue Flame Technology

This gas hob features a stainless steel surface for easy cleaning. It is equipped with four burners that utilize blue flame technology for efficient heat distribution.



## ADDITIONAL IMAGES



## Product Overview

### Professional Performance and Design

This high-performance four-burner gas hob combines advanced blue flame technology with a durable stainless steel construction. Designed for efficiency and precision, it features automatic Piezo ignition and robust cast iron pan supports to ensure stability and ease of use. It is an ideal solution for modern kitchens requiring reliable, low-consumption cooking performance.

## Technical Specifications



High-quality stainless steel construction with durable cast iron pan supports.

### Safety Features

Flame Failure Device (Optional)

<b>Number of Burners</b>	4
<b>Burner Technology</b>	Sabaf Blue Flame
<b>Surface Material</b>	Stainless Steel
<b>Pan Support Material</b>	Cast Iron
<b>Ignition System</b>	Automatic Piezo
<b>Power Compatibility</b>	AC 110-220V, DC 1.5V

## Key Benefits

### Efficiency Highlights

- Low gas consumption
- High thermal efficiency
- Time-saving cooking performance
- Easy-clean stainless steel surface