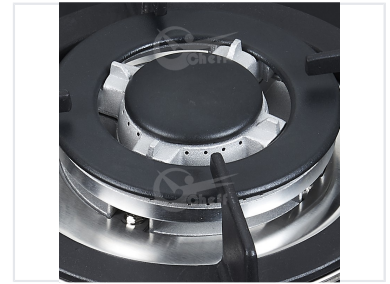


Four-Burner Stainless Steel Gas Hob

This gas hob features a stainless steel surface that is easy to clean. Its four burners provide a powerful blue flame and utilize automatic piezo ignition.



ADDITIONAL IMAGES



Product Overview

High-Efficiency 4-Burner Gas Hob

This four-burner stainless steel gas hob is designed for professional-grade performance and efficiency in modern kitchens. Featuring a durable, easy-to-clean surface and powerful blue flames, it ensures high efficiency to save gas, time, and money. The automatic piezo ignition and versatile burner configuration provide a seamless cooking experience for diverse culinary needs.

Key Features

Easy to Clean, Powerful Blue Flame, Low Gas Consumption, High Efficiency, Durable Construction

Technical Specifications



The sleek stainless steel surface and heavy-duty cast iron pan supports provide both durability and a modern aesthetic.

Technical Details

Component	Specification
Panel Material	Stainless Steel
Pan Support	Cast Iron
Ignition Type	Automatic Piezo / A.C (110-220V) or D.C 1.5V
Safety Device	Flame Failure Device (Optional)
Burner Count	4

Performance

Efficiency Metrics

4 Qty

Total Burners

Installation & Compatibility

Supported Fuel Types

- Natural Gas (NG)
- Liquefied Petroleum Gas (LPG)

Installation Style

Built-in