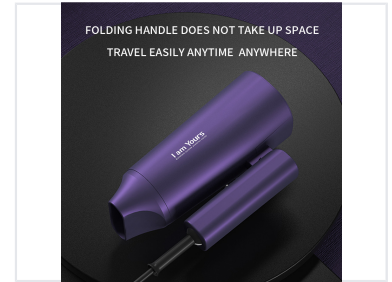
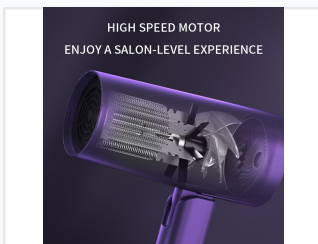


Foldable Travel Hair Dryer

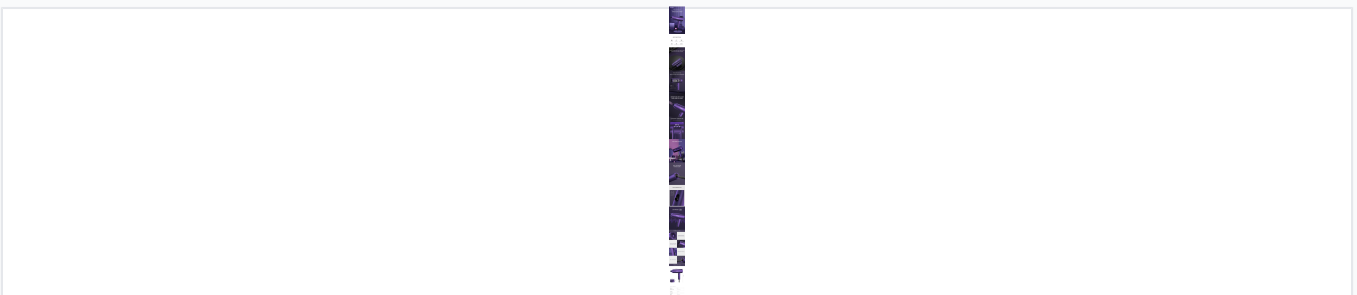
This foldable hair dryer features a DC motor with 1600-1800W power and multiple settings. It includes a foldable handle for portability and comes with a concentrator attachment.



ADDITIONAL IMAGES



Overview



High-speed salon-level hair dryer featuring 1800W power and a compact folding handle for travel.

Compact Salon-Level Performance

This foldable hair dryer provides a powerful salon-level experience designed for both home and travel. Its high-speed motor and 1800W heating element ensure rapid, efficient drying, while the constant temperature technology helps protect hair from heat damage. The space-saving foldable handle and lightweight design make it the perfect companion for travelers seeking performance without bulk.

Technical Specifications

Power Output

1800 W

Maximum Power

Input Voltage	220V-240V
Frequency	50 Hz
Motor Type	DC Motor

Features

Operating Modes

- 1 Speed Setting
- 2 Temperature Settings (Warm/Hot)
- Cold Air Setting

Design Features

Foldable Handle, Travel-Friendly, Low Noise Design, Compact Size

Dimensions and Accessories

Included Items

- 1 Concentrator Nozzle

Product Dimensions

181 x 214 mm