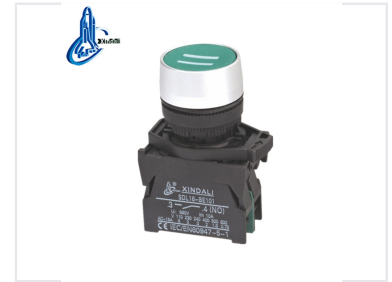


Flush Mount Push Button Switch with Return Symbol

This flush mount switch is waterproof and features a green button with a return symbol. It is designed for controlling circuits with AC voltage up to 660V.



Product Overview



Specializing in production of buttons and indicators since 1997

Professional Flush Mount Switch

This flush-mounted push button switch is engineered for high-performance industrial control, featuring a durable green actuator with clear return symbols. Constructed with a zinc alloy body and high-grade anti-flam plastic, it offers superior resistance and reliable operation in demanding environments. It is fully certified for safety and quality, making it an ideal choice for distribution cabinets, power stations, and communication network controls.

Technical Specifications

Mechanical Life

1000000 cycles
Push Button

500000 cycles
Selector Switch

Electrical Parameters

Parameter	Value
Rated Insulation Voltage	AC 600V
Conventional Heating Current	10A
Insulation Resistance	e5M©
Contact Resistance	d2h©
Dielectric Withstand	AC 2.5KV/min

Compliance and Standards

Certifications & Compliance

CE, ISO 9001, RoHS, UL, IEC 60947-5-1, GB/T 14048.1

Physical Dimensions



Flush push button
Spring return
Marked

XDL21-BA3361

N/O

3

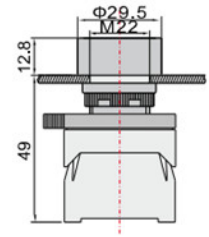
4

N/C

1

2

	White	XDL21-BA3341
	Green	XDL21-BA3311
	Green	XDL21-BA3361
	Green	XDL21-BA5331
	Black	XDL21-BA3351
	Black	XDL21-BA5321
	Blue	XDL21-BA6371
	Red	XDL21-BA4322
	Red	XDL21-BA4342



Mounting & Dimensions

- Mounting hole diameter: 22mm (M22)
- Head diameter: 29.5mm
- Overall height: 49mm
- Bezel height: 12.8mm