

Excavator Bucket Tooth 1U3302 for J300 Series

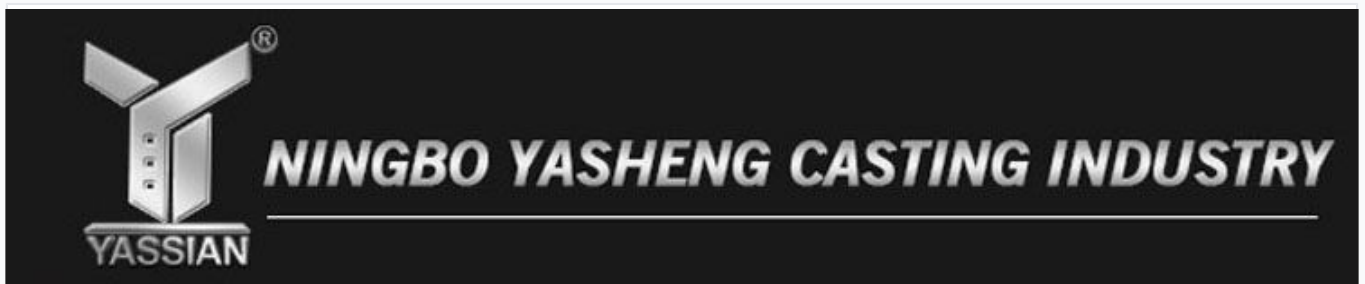
This bucket tooth is designed for use with CAT excavators, specifically the J300 series. Manufactured with durable materials and precise casting, it ensures optimal performance and longevity in demanding excavation applications.



ADDITIONAL IMAGES



Overview



High-Performance J300 Series Bucket Teeth

The 1U3302 bucket tooth is a precision-cast component designed for J300 series excavators, offering exceptional penetration and durability in demanding environments. Engineered with alloy steel, it features high impact toughness and superior wear resistance to maximize machine uptime. This versatile part is compatible with a wide range of heavy machinery brands, ensuring a reliable fit and professional finish for construction and mining applications.

Technical Specifications

Material	Alloy steel
Part Number	1U3302
Hardness	HRC 47-52
Net Weight	3.8 KG

Compatibility

Compatible Equipment	Caterpillar, Komatsu, JCB, Hyundai, Doosan
----------------------	--

Manufacturing & Quality

Manufacturing Features

- Precision casting process
- CNC drilled holes for accurate bolt matching
- Automatic electrostatic spray painting
- Smooth and professional finish
- High impact toughness

Certifications

ISO 9001:2015 • SGS

Service & Logistics

Warranty

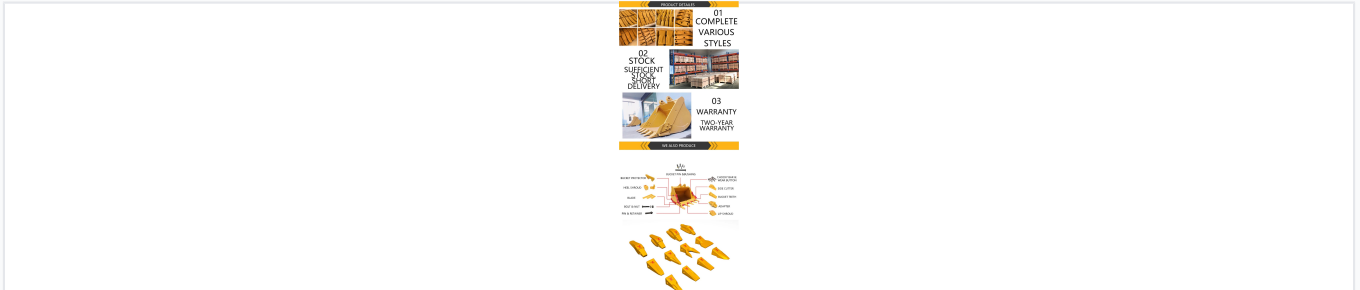
24 Months

Quality Warranty

Logistics Details

Parameter	Details
Minimum Order Quantity	10 Pieces
Delivery Time	30-35 Days
Packing	Plywood Case
Loading Ports	Ningbo, Shanghai, Guangzhou, Yiwu

Product Range



Available Related Parts

Bucket Protectors, Heel Shrouds, Blades, Bolts & Nuts, Pins & Retainers, Chocky Bars, Wear Buttons, Side Cutters, Adapters, Lip Shrouds