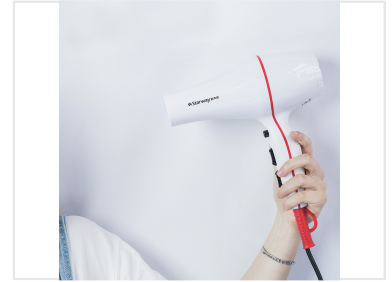


# Ergonomic Hair Dryer with Multiple Settings

This hair dryer features multiple heat and speed settings for customized styling. Its ergonomic design ensures comfortable use, while the powerful motor provides efficient drying.



## ADDITIONAL IMAGES



## Product Overview

### Professional Ergonomic Hair Dryer

This professional-grade hair dryer is designed for both efficiency and comfort, featuring a high-performance long-life motor suitable for demanding salon or home use. With multiple heat and speed settings, users can customize their styling experience while the integrated cool shot button helps lock in styles. Safety and convenience are prioritized through thermal protection and a durable, professional-length power cord.

## Technical Specifications

### Power & Performance

<b>2400 W</b> Max Power (AC)	<b>2200 W</b> Max Power (DC)
---------------------------------	---------------------------------

### Voltage Compatibility

220-240V, 125V

### Motor Type

Professional long-life AC/DC motor

## Settings & Controls

### Control Settings

Setting Type	Count
Speed Settings	2
Temperature Settings	3

### Key Features

- Cool shot button
- Thermal protection
- Seal stripe design

## Accessories

### Included Accessories

2 Concentrator Nozzles • Professional Power Cord