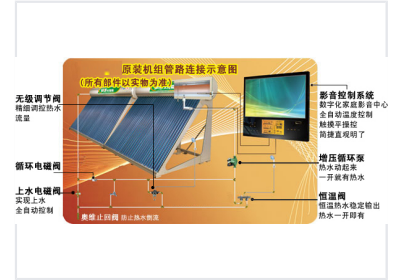


Embedded System Control Module

This embedded system control module is designed for automation and control applications. It enables precise management of hot water flow, temperature, and system operations within digital home theaters and similar setups.



Overview

Advanced Embedded Control System

This embedded system control module is designed to provide fully automatic, precise management of water heating and circulation systems. It integrates seamlessly with digital home theater audio-visual controls, offering intuitive touch-screen operation for complex environmental management. The system ensures immediate hot water availability and stable output temperatures through advanced valve and pump synchronization.

System Capabilities

Key Control Features

- Fully automatic water supply control
- Precise hot water flow regulation
- Digital home theater audio-visual integration
- Intuitive touch-screen interface
- Automatic temperature regulation

System Components

Integrated Components

Component	Function
Continuously Variable Valve	Precise hot water flow control
Circulating Solenoid Valve	System circulation management
Water Inlet Solenoid Valve	Automatic water supply
Check Valve	Prevents hot water backflow
Pressure Boosting Circulation Pump	Immediate hot water delivery
Thermostatic Valve	Stable hot water output