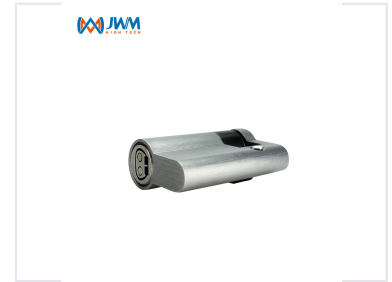


Electronic Door Lock Cylinder

This electronic lock cylinder is designed for access control systems. It features robust construction and keyless entry capabilities.



ADDITIONAL IMAGES



Product Overview



Intelligent Passive Access Control

This advanced electronic lock cylinder system integrates smart key technology with robust electronic cylinders to provide a high-security access control solution. Designed as a direct replacement for most traditional mechanical locks, the system requires no external power or wiring and is virtually maintenance-free. It utilizes a two-way identity authentication scheme to effectively prevent unauthorized access while providing comprehensive audit records for increased security.

Technical Specifications

WM-2000B-SXBK46/SXBK66

Materials : Lock case is made by Hb59-1 copper and rotatable lamella is made by steel.
Surface Treatment : chrome plate, nickeling
Working environment : Temperature (-40°C-70°C) Humidity (20%-97%)
Service Life : 10 years
Protection level : IP68
Relevant Certification : CE ROHS



WM-2000B-SXBK46



WM-2000B-SXBK66



Protection Rating

IP68

Operating Temperature

-40 °C
Min Temp

70 °C
Max Temp

Service Life

10 years

Operating Humidity

20% - 97%

Materials and Finish

WM-2000B-SXFH1/SXFH2

Materials : Lock case is made by stainless steel or zinc alloy.
Rotatable lamella is made by steel.
Surface Treatment : chrome plate and stainless steel natural color drawing
Portable replacement : whole size replaces the original lock cylinder
Working Environment : Temperature(-40°C-70°C) Humidity (20% -97%)
Service life : 10 years
Protection level : IP68



Materials Used

- Hb59-1 copper
- Stainless steel
- Zinc alloy
- Steel

Surface Finish

Chrome plating, Nickeling, Natural color drawing

Compliance

Certifications

CE, ROHS