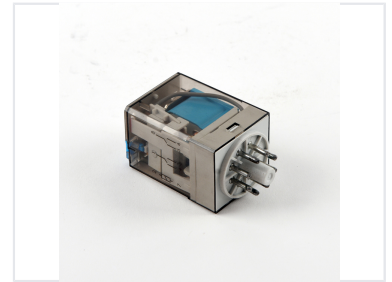


Electromechanical Relay with Transparent Casing

This electromechanical relay is designed for switching electrical circuits. It features a transparent casing that allows visual inspection of the internal components.



ADDITIONAL IMAGES



Product Overview

Versatile Electromechanical Relay

This miniature electromagnetic relay is designed for reliable switching in various industrial and automation systems. Its transparent casing allows for quick visual inspection of internal components during maintenance. Featuring a robust design and standardized pin configuration, it facilitates easy installation and replacement in PCB-based applications.

Technical Specifications

Rated Current

10 A

Rated Current

Rated Voltage

250 V

Contact Form

3 Open, 3 Closed

Contact Load

Medium power

Physical Characteristics

Size

Miniature

Casing

Transparent

Application Details

Protection Features

Protected

Usage

PCB Mount