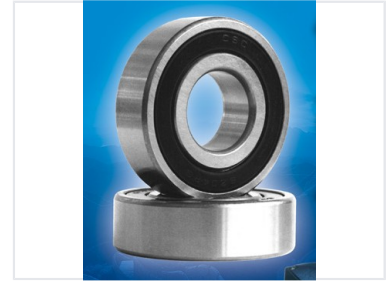


Electric Motor Deep Groove Ball Bearing

Precision engineered bearing designed for electric motors and high-speed applications, featuring deep groove raceways for optimal load distribution and smooth operation. Constructed from high-quality steel with enhanced lubrication for extended lifespan and reduced friction.



Overview

Precision Engineered Performance

This deep groove ball bearing is precision-engineered specifically for electric motors and high-speed industrial applications. Its advanced design features optimized deep groove raceways that ensure superior load distribution and smooth, quiet operation. Constructed from high-quality steel with enhanced lubrication, this component is built to provide an extended service life and reduced friction in demanding rotational environments.

Technical Specifications

Bearing Type	Deep Groove Ball Bearing
Model Number	6204-2RSL
Construction Material	High-quality steel

Features

Key Features	High-Speed Compatible, Enhanced Lubrication, Reduced Friction, Optimized Load Distribution
--------------	--

Applications

Suitable Applications

- Electric Motors
- Industrial Machinery
- Automotive Systems
- High-speed rotational equipment