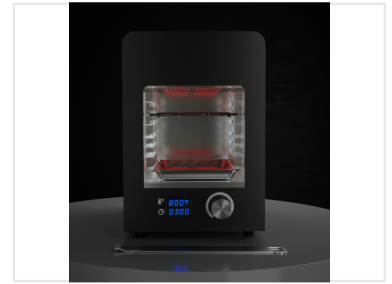


Electric Grill with Digital Display

This electric grill features a digital display for precise temperature and timer settings. The removable tray and rack system allows for versatile cooking options and easy cleaning.



Overview

High-Performance Electric Grilling

This electric grill is designed for professional-grade results, reaching temperatures up to 850°C for rapid, restaurant-quality searing. Engineered for efficiency, it cooks three times faster than a standard electric oven, allowing for delicious, perfectly prepared food in as little as three minutes. The integrated digital display provides precise control over temperature and timing, ensuring consistent performance for every meal.

Technical Specifications

Maximum Temperature	850 °C
Speed vs Conventional Oven	3x faster
Minimum Cook Time	3 minutes

Features

Design & Usability

- Removable tray system
- Removable rack system
- Illuminated interior
- Includes metal handling tool

Interface	Digital Display, Rotary Knob, Timer Control, Temperature Control
-----------	--