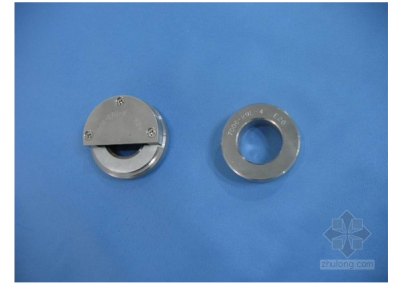


# E27 Lampholder Screw Thread GO Gauge

This GO gauge verifies the minimum dimension of E27 lampholder screw threads. The thread edge at the underside has a radius of  $0.5\text{mm} + 0.05\text{mm}$ .



## Product Overview

### Precision Quality Control

The E27 Lampholder Screw Thread GO Gauge is a precision-engineered tool designed to verify the dimensional accuracy of E27 lampholder screw threads. This gauge ensures compliance with international standards, guaranteeing that lampholders meet the required minimum dimensions for proper fit and functionality. Essential for quality control in the lighting industry, this tool provides reliable, repeatable testing for manufacturing and inspection processes.

## Technical Specifications

Edge Radius	0.5 mm
Radius Tolerance	0.05 mm
Primary Purpose	Verify minimum dimension of the lampholder screw thread and dimension X
Testing Method	Screw the gauge into the lampholder without using undue force
Compliance Standards	IEC 238, Sheet 7005-20