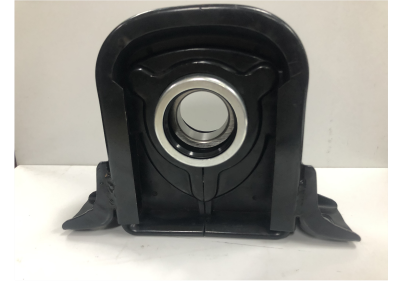


Driveshaft Center Support Bearing

This center bearing supports the driveshaft in automotive applications. It features a durable housing with integrated mounting points and a rubber isolator to dampen vibrations.



Product Overview

Driveshaft Center Support Bearing

This center support bearing is engineered to provide essential support for the driveshaft in automotive applications. Featuring a robust housing with integrated mounting points, it ensures secure and reliable installation. The design incorporates a precision-engineered metallic bearing and a high-quality rubber isolator, which work together to dampen vibrations and reduce operational noise, making it an ideal direct replacement for worn or damaged components.

Technical Details

Part Name	Center bearing
Materials	Rubber, Steel
Primary Usage	Adjust form and location tolerance