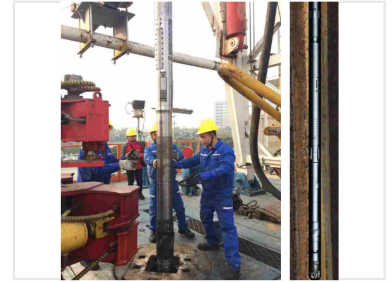


Downhole Rotary Steerable Tool for Directional Drilling

This downhole tool is used in directional drilling to automatically control the direction and inclination of a wellbore. It enables precise steering and drilling of complex well paths, optimizing well placement and reservoir contact.



Product Overview

Advanced Rotary Steerable System

This electronically controlled external pointing rotary steerable system features independent intellectual property rights and advanced hydraulic control technology. Designed for complex drilling environments, the tool utilizes a simplified mechanical structure that significantly reduces energy consumption and operational costs. By offering a cost-effective alternative to traditional systems, it lowers the barrier for high-performance directional drilling in challenging horizontal and large displacement wells.

Technical Specifications

Operational Advantages

- Reduced number of electronic modules
- Independently-sealed compartments
- Simplified mechanical structure
- High efficiency performance
- Battery power supply capability

Key Technical Features

Electronically Controlled, External Pointing, Oil Seal Technology, Contact Power Transmission, Hydraulic Control Self-Locking, Mud Hydraulic Drive

Performance Metrics

Economic Impact

50 %

Fabrication Cost Reduction

Applications

Recommended Drilling Operations

Directional Drilling • Large Displacement Wells • Horizontal Wells