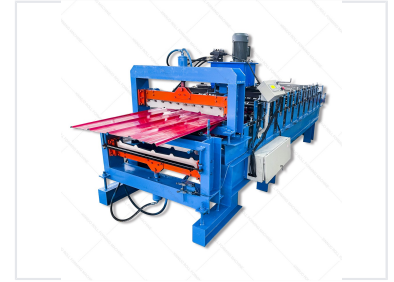
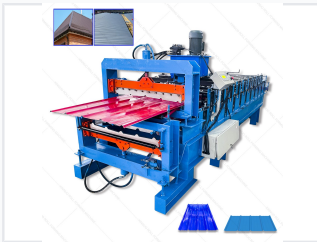


# Double Layer Roof Panel Roll Forming Machine

This double layer roof panel roll forming machine efficiently produces roof panels with two distinct profiles. Its robust construction and advanced control systems ensure precise forming of metal sheets for various roofing applications.



## ADDITIONAL IMAGES



## Overview



### Versatile Double Layer Production

This double-layer roof panel roll forming machine is engineered for the efficient and precise production of two distinct roofing profiles within a single compact footprint. By utilizing a double-decker configuration, it allows manufacturers to optimize workshop space while maintaining high-volume output for various metal roofing applications. The system features a robust steel frame and an automated control system to ensure consistent quality and long-term reliability in industrial environments.

## Key Performance Metrics



### Performance Highlights

**12 m/min**

Max Productivity

**5 T**

Loading Capacity

**15 m/min**

Max Working Speed

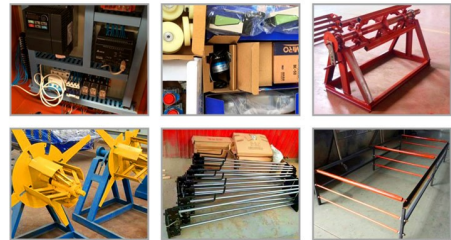
## Material Specifications

Compatible Materials	Color steel plate, Galvanized sheet, Aluminum coils
Feeding Material Thickness	0.8 mm
Feeding Material Width	914-1250mm

## Technical Parameters



Spare part pictures:



Roller Stations	11-18 rows (customizable)
Roller Material	High grade No. 45 forged steel
Shaft Diameter	70-80mm

## Control & Hydraulic Systems



### Control Cabinet Features

- PLC computer control system
- Programmable length and quantity settings
- Automatic and manual operation modes
- Multi-language support: English, Chinese, Spanish, Russian

### Hydraulic System Details

Parameter	Specification
Power	4kW
Oil Type	46# Hydraulic Oil
Working Pressure	12-16Mpa (Adjustable)
Solenoid Valve	1 Group

## Cutting & Finishing

### Cutting System

- Blade Material: Cr12Mov with quenched treatment
- Drive: Hydraulic drive
- Mechanism: Dimension decided by PLC control

## Uncoiler Specifications

### Manual Uncoiler Parameters

Feature	Value
Inner Diameter	500-508mm
Max Outer Diameter	1250mm
Steel Coil Width	1300mm
Main Motor Power	5.5KW AC Motor

## Certifications & Warranty

### Quality Standards

CE • ISO 9001 • Supplier Assessed

### Warranty

1 Year (Negotiable)