

# Double Layer Metal Roofing Sheet Roll Forming Machine

This machine produces double layer corrugated metal roofing sheets. It is designed for manufacturing IBR (Inverted Box Rib) roofing panels.



## ADDITIONAL IMAGES



## Product Overview



### High-Efficiency Double Layer Roll Forming

This double-layer metal roofing sheet machine is engineered for high-volume production of both corrugated and IBR roofing panels. Its dual-tier design allows for the simultaneous forming of two different profiles, significantly increasing operational efficiency and saving workshop space. Built with a robust steel frame and precision-engineered rollers, it ensures consistent, weather-resistant panel quality for diverse construction needs.

## Technical Performance



### Production Speed

**12 m/min**  
Max Speed

### Roller Stations

11-18 rows (customizable)

## Material Specifications



### Compatible Materials

Color steel plate, Galvanized sheet, Aluminum coils

### Feeding Material Width

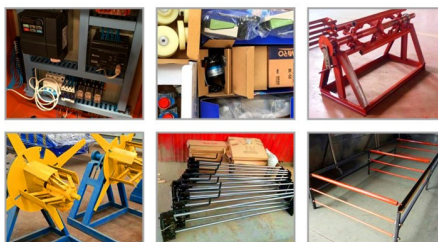
914-1250mm

### Material Thickness Range

0.3-0.8mm

## Component Details

Spare part pictures:



### Cutting System

- Blade Material: Cr12Mov with quenched treatment
- Drive: Hydraulic system
- Control: PLC computer integration

### Roller Material

High grade No.45 forged steel

### Shaft Diameter

80 mm

## Control & Automation



### Control Cabinet Features

- Programmable profile length and quantity
- Automatic and manual operation modes
- Multi-language support (English, Chinese, Spanish, Russian)

## Hydraulic & Power

### Hydraulic System Parameters

Parameter	Value
Motor Power	4kW
Working Pressure	12-16Mpa (Adjustable)
Oil Type	46# Hydraulic Oil

## Uncoiler Specifications

### Manual Uncoiler Specs

- Loading Capacity: 5T
- Inner Diameter: 500-508mm
- Max Outer Diameter: 1250mm
- Main Motor: 5.5KW AC

## Compliance & Quality

### Quality Standards

CE • ISO 9001 • Alibaba Assessed Supplier

## Service & Warranty

Warranty	1 year
----------	--------