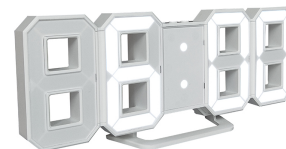
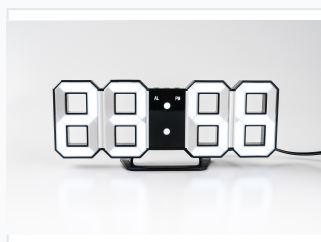


Digital LED 24-Hour Wall Clock with Alarm

This digital LED wall clock displays the time in a 24-hour format and includes an alarm function. Its modern design allows for wall mounting or desktop placement, making it suitable for various environments.



ADDITIONAL IMAGES



Product Overview

Modern Digital Timekeeping

This versatile LED digital wall clock is designed for both professional and residential environments, offering a clear 24-hour time display. It features essential functionality including a programmable alarm with a customizable snooze duration and a dedicated night mode for comfortable viewing. With its dual mounting options and battery backup capabilities, this clock ensures reliable performance and easy integration into any workspace or home setting.

Key Features

Core Functionalities

- 24-Hour Time Format
- Digital Alarm Function
- Adjustable Snooze (5-60 minutes)
- Night Mode (Default: 18:00~6:00)
- 3-Level Brightness Control

Technical Specifications

Power Input	DC 5V
Backup Battery Support	Yes

Design & Installation

Interface Controls

- Mode Button
- Up Adjustment
- Down Adjustment

Mounting Options	Wall Mount, Desktop Placement
------------------	-------------------------------