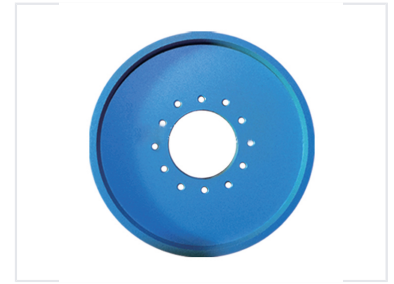


Diamond Dry Squaring Wheel

This diamond squaring wheel is designed for dry cutting applications. It is ideal for achieving precise dimensions on inner wall tiles and rustic tiles.



Product Overview

Professional Diamond Dry Squaring Wheel

The LB-W-D1 Diamond Dry Squaring Wheel is a high-performance tool engineered for precision processing of inner wall and rustic tiles. Designed for efficiency, this wheel offers excellent sharpness and rapid heat dissipation to ensure stable performance during intensive operation. Its optimized design significantly reduces working noise, contributing to a better industrial work environment.

Technical Specifications

Available Dimensions

Outer Diameter (mm)	Width (mm)	Bore Size (mm)	Grit Size
200	10	12	80
200	10	12	140
250	10	12	80
250	10	12	140

Key Features

Performance Benefits

Good sharpness, Quick heat dispelling, Low working noise

Applications

Material Compatibility

- Inner wall tiles
- Rustic tiles