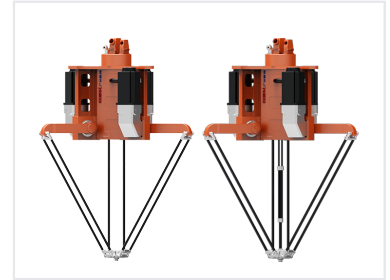


Delta Robot for High-Speed Sorting and Packing

This delta robot is designed for high-speed holding, unholding, and sorting operations. It is widely used in electronics, light industry, food, and medicine.



Overview

High-Speed Delta Robot

This high-speed, high-precision parallel robot is engineered for rapid pick-and-place, assembly, and sorting operations. Featuring a rigid frame construction for enhanced stability and accuracy, it integrates advanced control algorithms to ensure smooth, precise motion even at high speeds. Its compact design allows for seamless integration into space-constrained environments, making it an ideal solution for the electronics, food, medicine, and light industry sectors.

Application Fields

Suitable Industries

Electronics, Light Industry, Food Processing, Medical/Pharmaceutical, Packaging

Technical Performance

Key Performance Metrics

120 m/s²

Top Acceleration

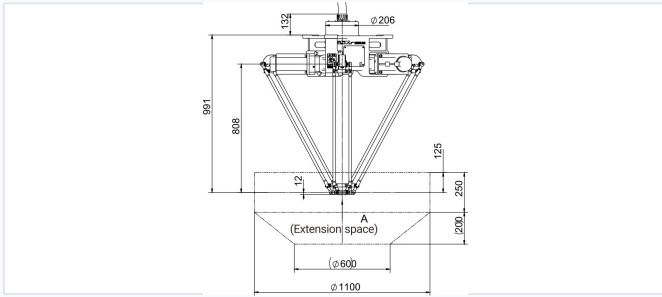
10 m/s

Top Velocity

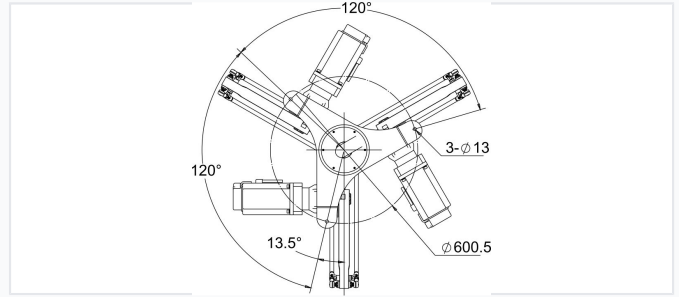
0.05 mm

Repeatability

Technical Specifications



Dimensional diagram illustrating spatial requirements and installation measurements.



Precision engineering detail of the three-arm rotary component design.

Model Specifications

Specification	C3-1100	C4-1000
Degrees of Freedom	3	4
Rated Loading (kg)	1	1
Max Loading (kg)	3	3
Working Range (mm)	1100x250	1000x250
Machine Weight (kg)	95	110
Drive System	AC Servo Drive	
Revolving Angle	180 °	