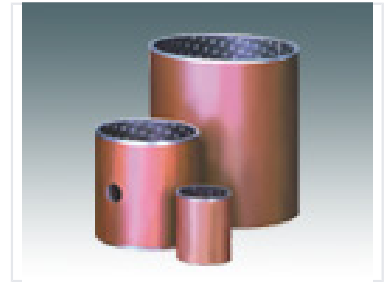


Cylindrical Roller Bearing

Cylindrical roller bearings are designed for machinery applications. These bearings feature a robust construction with a metallic outer shell and a patterned inner surface, likely containing lubricant pockets, and are suitable for high-load and high-speed applications within machinery components.



Product Overview

High-Performance Cylindrical Roller Bearing

This cylindrical roller bearing is engineered for demanding industrial machinery applications, providing reliable performance under significant mechanical stress. Its robust construction features a durable metallic outer shell integrated with a precision-engineered inner surface, optimized for high-load and high-speed environments. The design includes specialized lubricant pockets to ensure consistent operation and extended service life in critical machinery components.

Technical Specifications

Bearing Type	Cylindrical Roller Bearing
Key Performance Areas	High Load Capacity, High-Speed Operation, Industrial Machinery

Construction Details

Construction Features

- Robust metallic outer shell
- Patterned inner surface for lubrication retention
- Engineered for heavy-duty industrial machinery