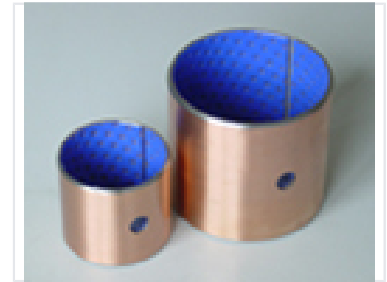


Cylindrical Roller Bearing

Cylindrical roller bearings are used in machinery to reduce friction between moving parts. They facilitate smooth rotational or linear motion in various industrial applications.



Product Overview

High-Performance Cylindrical Roller Bearing

This cylindrical roller bearing is engineered for demanding industrial applications requiring efficient load distribution and reduced rotational friction. The unit features a durable outer shell and a specialized internal lining designed to enhance operational smoothness and longevity. Its precision geometry makes it an ideal choice for facilitating reliable mechanical motion in heavy-duty machinery.

Technical Details

Construction Features

- Copper-colored outer shell
- Low-friction internal blue lining
- Lubrication/mounting aperture

Bearing Category

Cylindrical Roller

Compliance and Standards

Typical Applications

Industrial Machinery, Rotational Motion, Linear Motion, Heavy-duty Friction Reduction