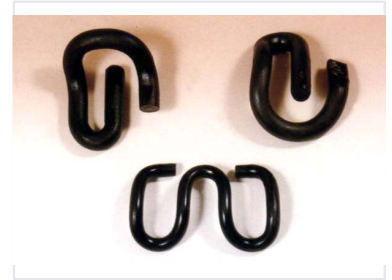


Curved Combination Joint Fittings

These heavy-duty fittings are designed for connecting components in machinery and industrial applications. The fittings feature a unique curved design, suitable for demanding industrial environments.



Overview

Industrial Curved Combination Joint Fittings

These heavy-duty combination and joint fittings are engineered for demanding industrial environments where reliability is paramount. Featuring a unique curved design, these components provide specialized alignment and secure connection points for complex machinery assemblies. Built for durability, they are an essential hardware solution for professionals requiring robust mechanical integration.

Technical Specifications

Material Finish

Black Metal • Industrial Grade

Primary Application

Machinery Assembly, Industrial Hardware, Component Connection

Design Profile

Curved geometry for specialized alignment

Environment Suitability

Heavy-duty / Industrial