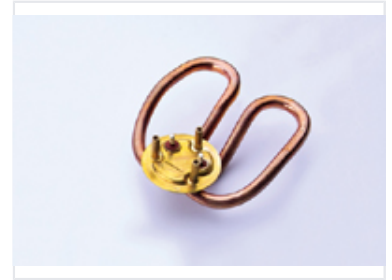


Copper Immersion Heating Element with Flange

This immersion heating element is constructed from high-quality copper. It is designed for direct immersion in liquids, providing efficient heat transfer in water heaters, boilers, and industrial heating systems.



Product Overview

High-Efficiency Heating Solution

This copper immersed heating element features a precision-engineered serpentine coil design, optimized for direct liquid immersion. Mounted on a durable circular brass flange, it ensures efficient heat transfer for demanding applications such as water heaters, boilers, and various industrial heating systems. Built with high-quality copper, this component offers excellent corrosion resistance and consistent thermal performance.

Technical Specifications

Construction Material	Copper (Heating Element), Brass (Flange)
Design Features	Serpentine Coil, Flange Mount, Corrosion Resistant

Applications

Primary Applications

- Water Heaters
- Industrial Boilers
- Liquid Heating Systems