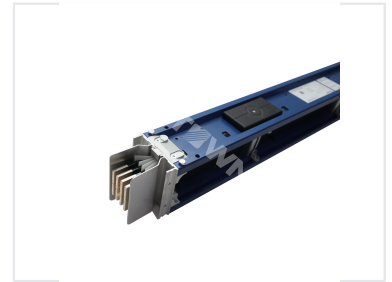
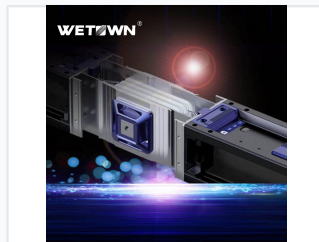
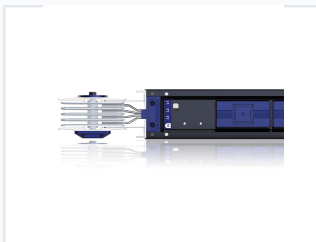


# Copper Contact Busway

The copper contact busway is a high-performance electrical distribution system designed for efficient and reliable power transmission. Its modular design allows for easy installation and flexible expansion to accommodate changing power needs.



## ADDITIONAL IMAGES



## Product Overview

### Pro-B Low Voltage Busway System

The Pro-B series is a high-performance bimetal busway system designed for low-voltage power transmission and distribution. Featuring a compact, sandwich-type architecture, it is engineered for maximum reliability, energy efficiency, and operational safety. This versatile solution is suitable for data centers, industrial plants, and commercial infrastructure, providing a scalable and space-saving alternative to traditional cabling.

## Technical Specifications

### Rated Current Capacity

<b>250 A</b> Minimum Current	<b>5000 A</b> Maximum Current
---------------------------------	----------------------------------

### Frequency

- 50
- 60

### IP Rating

IP66

## Compliance and Standards

IEC Standards

IEC61439

## Applications

### Industry Applications

- Data Centers
- Energy and Infrastructure
- Industrial Facilities
- Commercial Buildings
- Civil Buildings