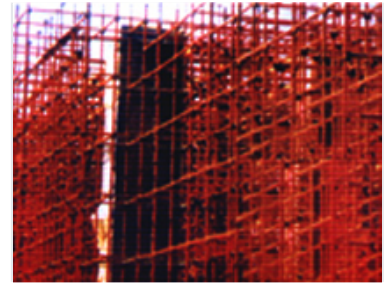


Construction Scaffolding System

This scaffolding system provides a temporary structure for supporting workers and materials on construction sites. It creates a safe and stable platform for completing construction tasks at height.



Product Overview

Professional Construction Scaffolding System

This industrial-grade scaffolding system is engineered for large-scale construction, providing a robust and stable temporary support structure for high-rise and complex infrastructure projects. The system features a dense network of horizontal and vertical metal supports designed for maximum safety and load-bearing efficiency. It is suitable for diverse applications including building construction, structural installation, and large-scale industrial facility maintenance.

Technical Standards

Social Credit Rating

AAA Grade Enterprise

Certifications

Quality Management System, Environmental Management, Occupational Health & Safety

Operational Capabilities

Suitable Applications

- High-rise buildings
- Steel structure installation
- Mechanical and electrical equipment assembly
- Industrial furnace and boiler installation
- Bridge and power infrastructure construction

Key Performance Metrics

100000 M3

Daily Excavation/Blasting Capacity

1.2 million M3

Annual Concrete Production Capacity