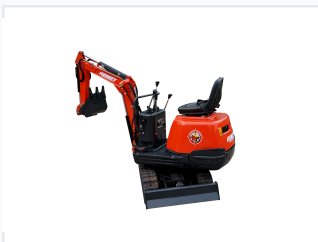


Compact Excavator

This compact excavator is designed for efficient digging and lifting. Its small size allows operation in confined spaces, while its hydraulic system enables efficient earthmoving.



ADDITIONAL IMAGES



Overview

Compact Excavator Performance

This compact and versatile earthmoving machine is engineered for efficiency in landscaping, construction, and demolition tasks. Featuring a powerful diesel engine and a zero-tail swing design, it provides exceptional maneuverability in confined spaces. The robust hydraulic system ensures precise control over digging and lifting operations, while the durable undercarriage offers stability across various terrains.

Technical Specifications

Engine Type	Diesel
Design Features	Zero-tail swing, Compact dimensions, Robust track system

Safety & Compliance

Safety Standards

ROPS Compliant • FOPS Compliant

Operational Capabilities

Operational Highlights

1 High

Hydraulic Control Precision

1 Easy

Maintenance Access

Ideal Applications

- Small-scale construction
- Landscaping
- Agricultural applications
- Demolition