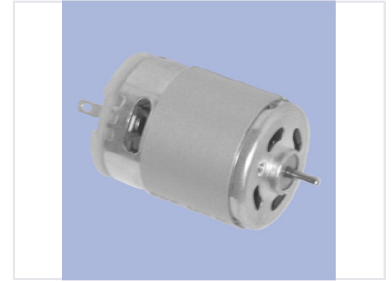


# Compact DC Electric Motor

This compact DC electric motor features a cylindrical metal housing with ventilation. It is suitable for low-power applications requiring rotational motion, such as robotics and small appliances.



## Product Overview

### Compact DC Electric Motor

This compact DC electric motor is designed for efficiency and versatility in various low-power applications. Featuring a durable cylindrical metal housing and an integrated end cap with ventilation holes, it ensures reliable operation during use. The unit includes accessible connection terminals, making it a straightforward choice for robotics, small appliance integration, and hobbyist projects requiring precise rotational motion.

## Physical Characteristics

### Design Features

Cylindrical Metal Housing, Ventilated End Cap, Protruding Shaft

## Applications

### Typical Applications

- Robotics
- Hobby Projects
- Small Appliances

## Technical Specifications

### Motor Type

DC Electric Motor