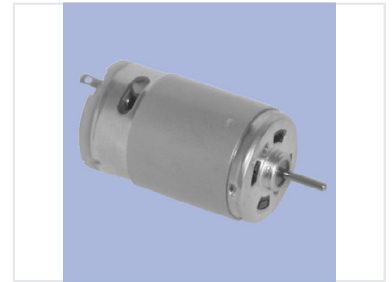


Compact DC Electric Motor

This compact DC electric motor is designed for various applications requiring rotary motion. It features a cylindrical housing, a shaft for power transmission, and electrical terminals for connection to a DC power source.



Product Overview

Compact DC Electric Motor

This compact DC electric motor is engineered for reliable performance and efficient energy conversion in a variety of applications. Featuring a durable cylindrical housing and a standard shaft for power transmission, it is designed for easy integration into robotics, hobby projects, and small-scale industrial equipment. Its straightforward design ensures consistent rotary motion when connected to a compatible DC power source.

Technical Specifications

Motor Type	DC Electric Motor
Design Features	Cylindrical housing, Shaft power transmission, DC terminal connections

Applications

Suitable Applications

- Robotics
- Hobby projects
- Small-scale industrial equipment