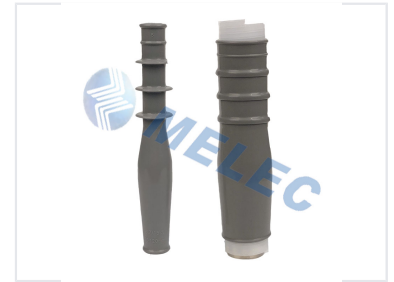


Cold Shrinkable Cable Termination Kit (Indoor)

This cold shrink termination kit is suitable for indoor applications with polymeric cables up to 8.7/15(17.5)kV. The product is tested in accordance with IEC 60502-4 and can be used for copper or aluminum alloy conductors.



ADDITIONAL IMAGES



Overview

Cold Shrinkable Termination Kit

This cold shrinkable cable termination kit is engineered for reliable indoor electrical connections, supporting voltage ratings up to 8.7/15(17.5)kV. Designed for compatibility with PVC, PE, and XLPE polymeric cables, it accommodates both copper and aluminum alloy conductors. The system utilizes pre-expanded silicone rubber components that shrink tightly onto the cable, ensuring superior insulation, UV resistance, and hydrophobicity without the need for heat or specialized tools.

Technical Specifications

Compliance Standards

IEC 60502-4

Voltage Rating

8.7/15(17.5) kV

Compatible Cable Types

PVC, PE, XLPE

Conductor Compatibility

Copper, Aluminium Alloy

Features

Key Installation Benefits

- No heat, torches, or special tools required
- Pre-expanded components on easy-to-remove spiral holdout
- Integrated geometric stress control
- Void-filling mastic reduces positioning errors

Material Performance

- High UV-resistance
- Excellent anti-tracking properties
- Superior hydrophobicity for long service life

Sizing Data

1-core

Voltage U ₀ /U(Um)	Application	Cross-section (mm ²)	Nominal Insulation Thickness (mm)	Diameter over Insulation (mm)	Type	Cable Lug
8.7/15(17.5)kV	Indoor	25-50	4.5	17-21	MLN-15-1-25-50	AUS/AU
		70-120		22-26	MLN-15-1-70-120	
		150-240		26.5-31	MLN-15-1-150-240	
		300-400		32.7-36	MLN-15-1-300-400	
	Outdoor	25-50		17-21	MLW-15-1-25-50	DDT/AU
		70-120		22-26	MLW-15-1-70-120	
		150-240		26.5-31	MLW-15-1-150-240	
		300-400		32.7-36	MLW-15-1-300-400	

Technical specifications for 1-core indoor cable terminations.

3-core

Voltage U ₀ /U(Um)	Application	Cross-section (mm ²)	Nominal Insulation Thickness (mm)	Diameter over Insulation (mm)	Type	Cable Lug
8.7/15(17.5)kV	Indoor	25-50	4.5	17-21	MLN-15-3-25-50	AUS/AU
		70-120		22-26	MLN-15-3-70-120	
		150-240		26.5-31	MLN-15-3-150-240	
		300-400		32.7-36	MLN-15-3-300-400	
	Outdoor	25-50		17-21	MLW-15-3-25-50	DDT/AU
		70-120		22-26	MLW-15-3-70-120	
		150-240		26.5-31	MLW-15-3-150-240	
		300-400		32.7-36	MLW-15-3-300-400	

Technical specifications for 3-core indoor cable terminations.

Termination Dimensions & Sizing

Cross-Section (mm ²)	Diameter over Insulation (mm)	Insulation Thickness (mm)
25-50	17-21	4.5
70-120	22-26	4.5
150-240	26.5-31	4.5
300-400	32.7-36	4.5