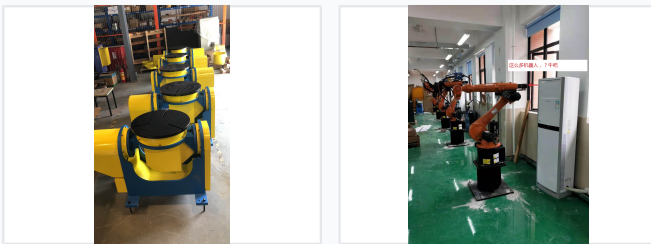


CNC Rotary Welding Positioner

This CNC welding positioner is designed for automated workpiece rotation in welding applications. It allows for precise positioning and welding speed, and can be integrated with robotic welding systems.



ADDITIONAL IMAGES



Overview

High-Precision CNC Welding Support

This CNC Rotary Welding Positioner is a specialized auxiliary system designed to optimize the welding displacement of rotary workpieces. By providing ideal processing positions and adjustable welding speeds, it significantly enhances the efficiency of both manual and robotic welding operations. The system is engineered for seamless integration into automated welding centers, ensuring high-throughput and consistent weld quality.

Core Functions

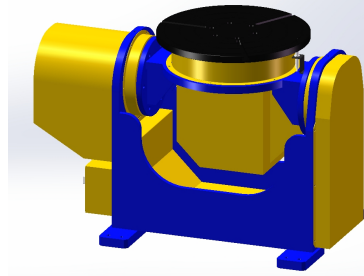
Key Features

- Frequency converter stepless speed regulation
- Remote control box for manual operation
- Linkage operation with robotic control systems
- High speed regulation precision
- Variable frequency turnover mechanism

Primary Function

Special welding auxiliary equipment for rotary work displacement

Technical Design



The heavy-duty rotating table and drive system are designed for precise positioning and smooth rotation during automated welding.

Adjustment Capabilities

- Lifting
- Turning
- Rotating

Mechanical Composition

Rotating Mechanism, Turnover Mechanism, Worktable, Frequency Converter, Remote Control Box

Compatibility

System Integration

Welding Robots • Manipulators • Manual Operators • Welding Machines

Application Suitability

Ideal for workpiece displacement during robot welding operations and automated welding centers.