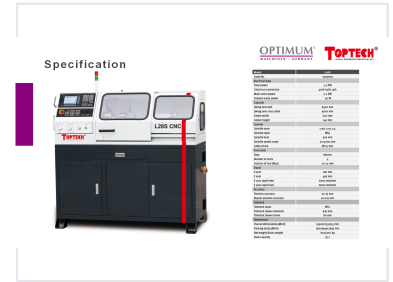
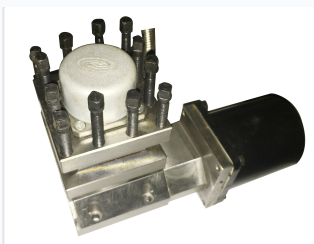


CNC Lathe Machine for Small-Batch Machining

This CNC lathe machine is designed for small-batch machining and education. It features a high-speed spindle unit, servo drive, and linear guide for precise and efficient operation.



ADDITIONAL IMAGES



Overview

Compact Precision CNC Lathe

This CNC lathe machine is a high-speed, precision-engineered solution specifically designed for small-batch machining and educational environments. It features a robust construction with linear guides and ball screws on two axes, ensuring reliable performance for high-accuracy metal cutting operations. Compact and lightweight, it conforms to European Safety Standards, making it an ideal choice for manufacturing workshops and technical training.

Key Features

Performance Highlights

4000 rpm

Max Spindle Speed

300 mm

Swing Over Bed

2.2 kW

Main Motor

4 Slots

Tool Turret

Standard Equipment

- Servo-spindle and Servo-drive
- Linear guide and ball screws
- Automatic lubricating system
- Coolant system
- LED work lamp
- European Safety Standard compliance

Machining Capacity

Swing Over Bed	300 mm
Swing Over Cross Slide	200 mm
Center Width	600 mm

Spindle & Tooling

Spindle Bore	26 mm
Spindle Taper	MT4
Turret Type	Electric 4-tool turret

Travel & Accuracy

Axis Travel (X/Z)		
Axis	Travel	Rapid Feed
X Axis	180 mm	6000 mm/min
Z Axis	465 mm	8000 mm/min
Repeat Position Accuracy	0.015 mm	

Electrical & Dimensions

Electrical Connection	400V 50Hz 3ph
Net Weight	800 kg
Overall Dimensions (LxWxH)	1590 x 705 x 1515 mm

Compliance

Safety Standards	European Safety Standard, CE Compliant
------------------	--