

# CG150 Tricycle Engine

This CG150 engine is designed for tricycle applications. It features enhanced cooling and lubrication for reliability under heavy loads.



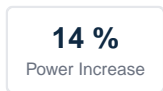
## Overview

### New Upgraded CG150 Engine

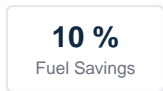
This upgraded CG150 engine is specifically engineered for tricycle applications, offering a robust and reliable power source. It features significant technical optimizations, including a lightweight piston design and structural enhancements that deliver higher torque at lower speeds. These improvements result in reduced vibration, increased ride comfort, and superior performance for demanding transportation needs.

## Performance Metrics

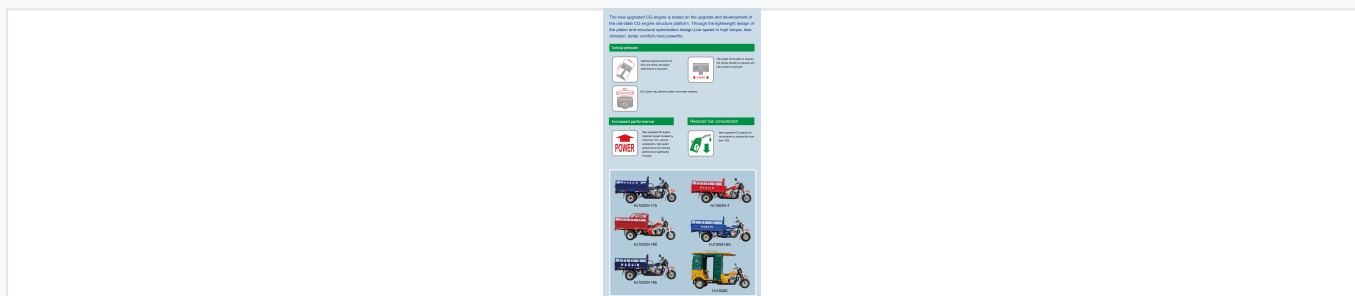
### Maximum Power Increase



### Fuel Consumption Reduction



## Technical Specifications



Technical optimization details, including piston weight reduction and performance improvements.

### Key Technical Features

- Optimized bore and stroke structure
- DLC piston rings for diamond-quality wear resistance
- Lightweight piston design
- Enhanced cooling system
- Improved lubrication system

## Compatibility

### Compatible Models

HJ150ZH-175, HJ150ZH-180, HJ150ZH-185, HJ150ZH-7, HJ150ZH-6A, HJ150ZK