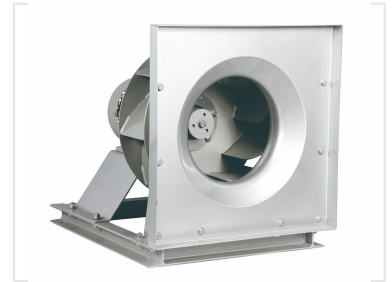


Centrifugal Fan with Square Housing

This centrifugal fan is a robust ventilation solution for industrial and commercial use. It features a sturdy, all-metal construction with a square housing and a centrally mounted impeller driven by an electric motor.



Product Overview

Industrial Centrifugal Plug Fan

The SYWB series centrifugal fan is a robust direct-driven plug fan engineered for high-volume air movement in demanding industrial and commercial environments. Featuring a sturdy, all-metal construction with a square housing, it is designed for integration into complex HVAC and exhaust systems. The unit utilizes a direct-drive mechanism for superior reliability, supported by a heavy-duty base frame for simplified installation and long-term stability.

Technical Performance

Key Performance Metrics

1000 m³/h

Minimum Air Volume

100000 m³/h

Maximum Air Volume

2000 Pa

Max Pressure

Technical Specifications

Drive Type

Direct Driven

Impeller Diameter Range

250 - 1400 mm

Design and Build

Material Characteristics

All-metal construction, Square housing, Heavy-duty base frame