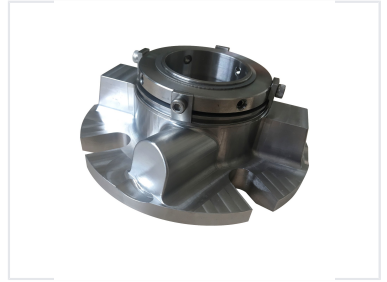
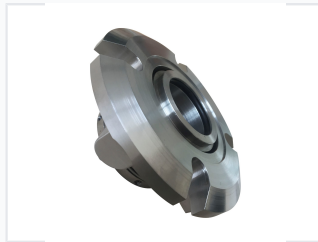
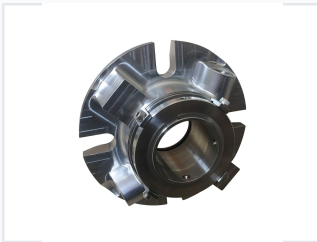


# Cartridge Mechanical Seal for Water Pumps

This cartridge mechanical seal is designed for water pump applications. It offers wear resistance and superior sealing effects.



## ADDITIONAL IMAGES



## Product Overview

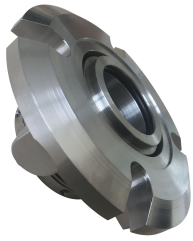
# Description

Technical diagram of the J5610-43 cartridge mechanical seal.

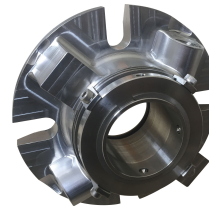
### J5610-43 Cartridge Mechanical Seal

The J5610-43 is a robust cartridge mechanical seal specifically engineered for water pump applications. Designed to minimize downtime, its cartridge configuration allows for easy installation and maintenance. Constructed from high-quality materials, this seal provides superior wear resistance, low friction, and reliable sealing effects to ensure optimal pump efficiency and longevity in demanding environments.

## Technical Specifications



Close-up view of the mechanical seal components designed for high-pressure water pump environments.



Precision-machined housing and sealing faces for reliable, leak-free operation.

Model Number	J5610-43
Material	ca/sic/nbr
Dimensions	43 mm
Weight	0.015 kg

## Performance Metrics

### Performance Ratings

**2 Mpa**

Max Pressure

**3000 rpm**

Max Speed

## Features & Applications

### Primary Applications

- Water pumps
- Automotive cooling systems
- Electric power generation projects

Key Features	Wear resistant, Superior sealing, Low friction, Easy replacement, Customizable
--------------	--