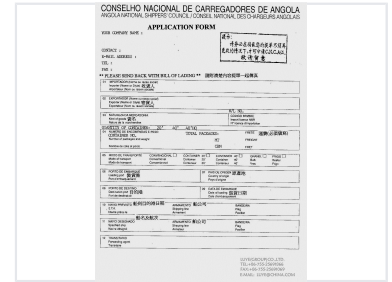


Cargo Shipping Details Form

This form is used to record cargo shipping details. It includes fields for importer and exporter information, nature of goods, container quantity, and transport details.



Overview

Official Cargo Shipping Documentation

This standardized application form is designed to facilitate the processing of cargo shipping details for international trade compliance. It captures all critical information required by maritime authorities, including importer/exporter data, vessel details, container quantities, and port specifications. By providing a structured template for documentation, this form helps ensure accuracy in bill of lading processing and streamlines the customs and shipping declaration workflow.

Documentation Requirements

Primary Data Fields

Importer Information, Exporter Information, Nature of Goods, Container Details, Bill of Lading Number, Mode of Transport, Loading/Destination Ports, Vessel Details, Forwarding Agent Info

Shipping Metrics

Supported Container Types

- 20' Container
- 40' Container
- 40' HQ Container
- Conventional
- Bulk (Granel)
- Reefer (Frigo)

Standardized Measurement Units

MT (Metric Ton), CBM (Cubic Meter), Package Count

Compliance Details

Processing Guidelines

- Verify Bill of Lading accuracy before final application
- Must be submitted alongside the Bill of Lading
- Includes Import License number fields
- Tracks vessel flag and shipping line information